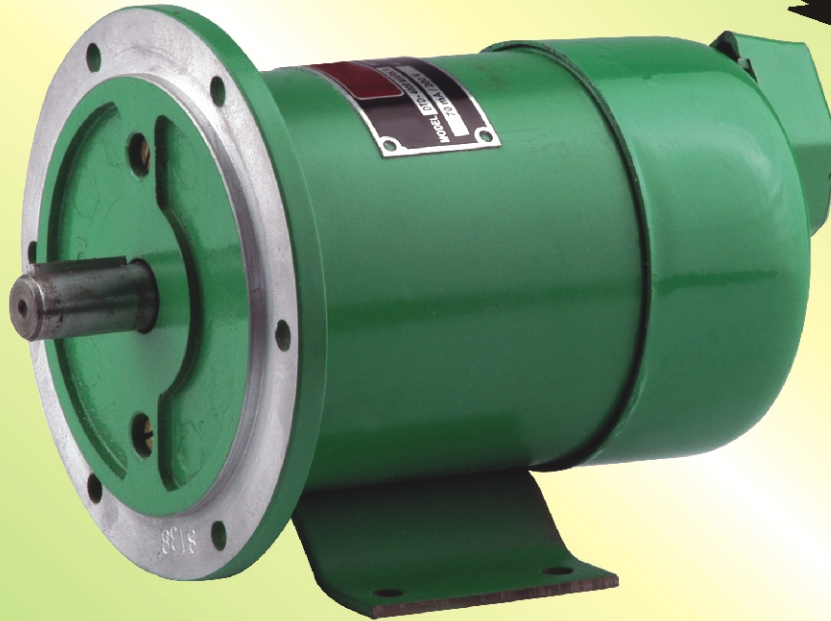


DTD-4000 Mark-II DC Tachogenerator

(Suitable for direct replacement against: ADOR - DTG-4000 Mark-II)



Available in EX-STOCK.
Also available Spare
ORIGINAL Brushes.

DTD-4000 Mark-II

Principle of operation:

The permanent magnet DC Tachogenerator is a rotary speed transducer, which develops DC Voltage proportional to the speed, for drive, control and measurement applications in industrial machines.

Permanent magnetic field eliminates the need of external excitation and offers extremely reliable and stable outputs. The accuracy of the Tachogenerator decides the maximum accuracy of speed of the controlled machine.

Features:

The Tachogenerator incorporates following features to ensure reliable and long service life even under harsh operating conditions:

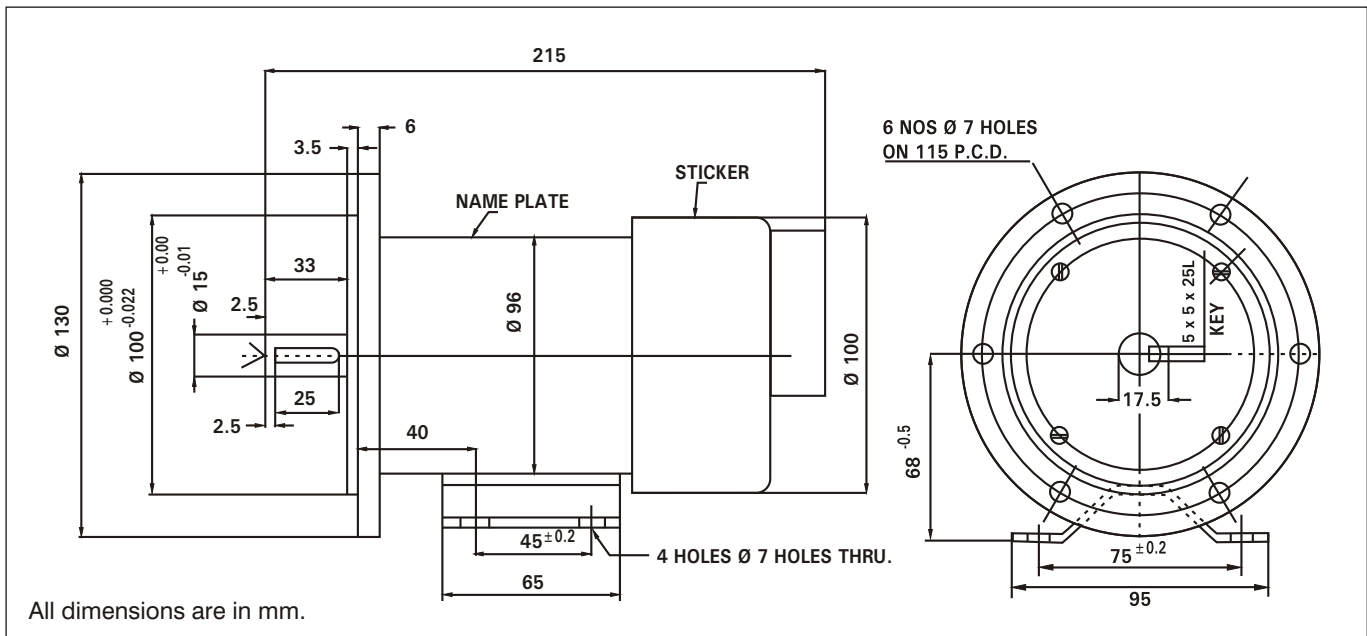
- Silver Graphite brushes are used to ensure long life, minimum voltage drop & spark free commutation.
- Pre-lubricated and sealed precision ball bearings are used for long maintenance free operation.
- Brush holders, brushes designed to ensure smooth movement, equal brush tension and sparkles operation.

- Electrolytic grade copper segments moulded and machined to close tolerances in the commutator for sparkles and minimum wear. Use of mica insulation between segments to offer maximum dielectric strength and stability.
- Armature built with special grade silicon steel stampings and wound with polyester grade Class "F" Enameled wire and vacuum impregnated for high electrical and mechanical strength.
- Armature dynamically balanced for vibration free rotation, sparkles commutation and low ripple content.
- Induction hardened Shaft & key for long life.
- Universal mounting possibility: Flange cum foot mounting.

Optional:

- Other Output Voltage ratings or mechanical changes are possible / available on request.
- Temperature compensation available on request.
- Suitable Flexible Couplings are available on request at extra cost.

Output Voltage (+/-5%):	0.05V/rpm (200Vdc at 4000 rpm / 50 Vdc at 1000 rpm)
Output Current:	70 mA (max.)
Speed max.:	4000 rpm
Linearity error:	<0,5%
Ripple content:	<0,5%
Armature Resistance:	85 Ohms +/-3% (25°C)
Insulation Class:	F
Protection:	IP-44 (Totally enclosed)
Mounting:	Universal - Flange cum Foot
Moment of Inertia:	$4 \times 10^{-6} \text{ Kgm}^2$
Brushes:	Silver Graphite (Size: 4.5 x 4.5 x 12.5mm)
Weight (approx.):	4.3 Kgs.
Colour:	Apple Green (other colours - optional)



Applications:

Amusement Rides; Cable Cars / Ropeways; Cement Mills; Elevators / Lifts; Foundries / Casting Lines; Glass / Ceramic Industry; Machine Tools / S.P.M.; Material Handling Cranes; Metal Forming / Stamping Presses; Mining Bucket Excavators / Stacker Reclaimers; Paper Mills; Port Cranes; Steel Mills / Rolling Mills; Sugar Mills; Textile Machines; Transfer / Assembly Lines; Tube Mills; Tyre Presses / Rubber Moulding Machines; etc....

No part of this Catalogue may be printed or reproduced in any form without the written permission of "Shah Enterprise." All rights reserved.



Marketed By:
SHAH ENTERPRISE

293 Princess Street, Tel. : 022-66337192 / 22050457
 #S/3 Sopariwala House, Email : sales@electrowebstore.com
 Mumbai 400 002, MH. URL : www.electrowebstore.com
 INDIA. URL : www.electrowebstore.net



Importer, Stockist & Distributor of:
 DC Tachogenerators; Encoders; Over-Speed Switches;
 Micro & Limit Switches; Fuses; Solid State Relays;
 Analogue S.S.R.; PID Controllers; DC-DC Converters;
 S.M.P.S.; Power Semiconductor Devices; etc